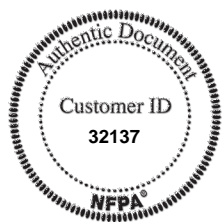


NFPA® 550

Guide to the Fire Safety Concepts Tree

2012 Edition



NFPA, 1 Batterymarch Park, Quincy, MA 02169-7471
An International Codes and Standards Organization



IMPORTANT NOTICES AND DISCLAIMERS CONCERNING NFPA® DOCUMENTS NOTICE AND DISCLAIMER OF LIABILITY CONCERNING THE USE OF NFPA DOCUMENTS

NFPA® codes, standards, recommended practices, and guides (“NFPA Documents”), of which the document contained herein is one, are developed through a consensus standards development process approved by the American National Standards Institute. This process brings together volunteers representing varied viewpoints and interests to achieve consensus on fire and other safety issues. While the NFPA administers the process and establishes rules to promote fairness in the development of consensus, it does not independently test, evaluate, or verify the accuracy of any information or the soundness of any judgments contained in NFPA Documents.

The NFPA disclaims liability for any personal injury, property or other damages of any nature whatsoever, whether special, indirect, consequential or compensatory, directly or indirectly resulting from the publication, use of, or reliance on NFPA Documents. The NFPA also makes no guaranty or warranty as to the accuracy or completeness of any information published herein.

In issuing and making NFPA Documents available, the NFPA is not undertaking to render professional or other services for or on behalf of any person or entity. Nor is the NFPA undertaking to perform any duty owed by any person or entity to someone else. Anyone using this document should rely on his or her own independent judgment or, as appropriate, seek the advice of a competent professional in determining the exercise of reasonable care in any given circumstances.

The NFPA has no power, nor does it undertake, to police or enforce compliance with the contents of NFPA Documents. Nor does the NFPA list, certify, test, or inspect products, designs, or installations for compliance with this document. Any certification or other statement of compliance with the requirements of this document shall not be attributable to the NFPA and is solely the responsibility of the certifier or maker of the statement.

IMPORTANT NOTICES AND DISCLAIMERS CONCERNING NFPA DOCUMENTS

ADDITIONAL NOTICES AND DISCLAIMERS

Updating of NFPA Documents

Users of NFPA codes, standards, recommended practices, and guides (“NFPA Documents”) should be aware that these documents may be superseded at any time by the issuance of new editions or may be amended from time to time through the issuance of Tentative Interim Amendments. An official NFPA Document at any point in time consists of the current edition of the document together with any Tentative Interim Amendments and any Errata then in effect. In order to determine whether a given document is the current edition and whether it has been amended through the issuance of Tentative Interim Amendments or corrected through the issuance of Errata, consult appropriate NFPA publications such as the National Fire Codes® Subscription Service, visit the NFPA website at www.nfpa.org, or contact the NFPA at the address listed below.

Interpretations of NFPA Documents

A statement, written or oral, that is not processed in accordance with Section 6 of the Regulations Governing Committee Projects shall not be considered the official position of NFPA or any of its Committees and shall not be considered to be, nor be relied upon as, a Formal Interpretation.

Patents

The NFPA does not take any position with respect to the validity of any patent rights referenced in, related to, or asserted in connection with an NFPA Document. The users of NFPA Documents bear the sole responsibility for determining the validity of any such patent rights, as well as the risk of infringement of such rights, and the NFPA disclaims liability for the infringement of any patent resulting from the use of or reliance on NFPA Documents.

NFPA adheres to the policy of the American National Standards Institute (ANSI) regarding the inclusion of patents in American National Standards (“the ANSI Patent Policy”), and hereby gives the following notice pursuant to that policy:

NOTICE: The user’s attention is called to the possibility that compliance with an NFPA Document may require use of an invention covered by patent rights. NFPA takes no position as to the validity of any such patent rights or as to whether such patent rights constitute or include essential patent claims under the ANSI Patent Policy. If, in connection with the ANSI Patent Policy, a patent holder has filed a statement of willingness to grant licenses under these rights on reasonable and nondiscriminatory terms and conditions to applicants desiring to obtain such a license, copies of such filed statements can be obtained, on request, from NFPA. For further information, contact the NFPA at the address listed below.

Law and Regulations

Users of NFPA Documents should consult applicable federal, state, and local laws and regulations. NFPA does not, by the publication of its codes, standards, recommended practices, and guides, intend to urge action that is not in compliance with applicable laws, and these documents may not be construed as doing so.

Copyrights

NFPA Documents are copyrighted by the NFPA. They are made available for a wide variety of both public and private uses. These include both use, by reference, in laws and regulations, and use in private self-regulation, standardization, and the promotion of safe practices and methods. By making these documents available for use and adoption by public authorities and private users, the NFPA does not waive any rights in copyright to these documents.

Use of NFPA Documents for regulatory purposes should be accomplished through adoption by reference. The term “adoption by reference” means the citing of title, edition, and publishing information only. Any deletions, additions, and changes desired by the adopting authority should be noted separately in the adopting instrument. In order to assist NFPA in following the uses made of its documents, adopting authorities are requested to notify the NFPA (Attention: Secretary, Standards Council) in writing of such use. For technical assistance and questions concerning adoption of NFPA Documents, contact NFPA at the address below.

For Further Information

All questions or other communications relating to NFPA Documents and all requests for information on NFPA procedures governing its codes and standards development process, including information on the procedures for requesting Formal Interpretations, for proposing Tentative Interim Amendments, and for proposing revisions to NFPA documents during regular revision cycles, should be sent to NFPA headquarters, addressed to the attention of the Secretary, Standards Council, NFPA, 1 Batterymarch Park, P.O. Box 9101, Quincy, MA 02169-7471; email: stds_admin@nfpa.org

For more information about NFPA, visit the NFPA website at www.nfpa.org.

Copyright © 2012 National Fire Protection Association®. All Rights Reserved.

NFPA® 550
Guide to the
Fire Safety Concepts Tree
2012 Edition

This edition of NFPA 550, *Guide to the Fire Safety Concepts Tree*, was prepared by the Technical Committee on Fire Risk Assessment Methods. It was issued by the Standards Council on December 13, 2011, with an effective date of January 2, 2012, and supersedes all previous editions.

This edition of NFPA 550 was approved as an American National Standard on January 2, 2012.

Origin and Development of NFPA 550

The NFPA Committee on Systems Concepts was organized to be responsible for developing systems concepts and criteria for fire protection in structures. A primary accomplishment of this committee was the development of the Fire Safety Concepts Tree. This *Guide to the Fire Safety Concepts Tree* was developed by the Committee on Systems Concepts in 1985. Appreciation is extended to Dr. John M. Watts, Jr., of the Fire Safety Institute for his major contribution to the contents of this document.

The Committee on Systems Concepts was discharged in October 1990, at which time the Standards Council assumed responsibility for this document.

The 1995 edition represented a reconfirmation of the 1986 edition with editorial clarifications.

The 2002 edition represented the majority of the 1995 edition with changes reflecting NFPA's requirements for document uniformity as prescribed by the *Manual of Style for NFPA Technical Committee Documents*. The changes consisted of formatting, renumbering, and editorial clarifications. Minor changes were made to content and several deletions made with respect to unreferenced text.

The 2007 edition represented a reconfirmation of the 2002 edition.

The 2012 edition represents a reconfirmation of the 2007 edition with updates to referenced publications where necessary.

Technical Committee on Fire Risk Assessment Methods

Douglas Crawford, *Chair*

Office of the Fire Marshal of Ontario, Canada, Canada [E]

Justin B. Biller, Roanoke County Office of Building Safety, VA [E]

Shane M. Clary, Bay Alarm Company, CA [M]
Rep. Automatic Fire Alarm Association, Inc.

D. Allan Coutts, URS Safety Management Solutions LLC, SC [U]

William W. Doerr, FM Global, MA [I]

Kenneth W. Dungan, Risk Technologies, LLC, TN [SE]

Michael A. Falzarano, Tyco Electronics, PA [M]

Russell P. Fleming, National Fire Sprinkler Association, Inc., NY [M]

Simon Foo, Public Works & Government Services Canada (PWGSC), Canada [U]

Tonya L. Hoover, CAL Fire, Office of the State Fire Marshal, CA [E]

Morgan J. Hurley, Society of Fire Protection Engineers, MD [U]

Frank L. Keisler, Jr., CNA Insurance Company, GA [I]

Muhammad S. Mahtab, Latitude Marine Consultants, Canada [SE]

Brian J. Meacham, Worcester Polytechnic Institute, MA [SE]

James W. Naylor, Washington Savannah River Company, SC [U]

Roz Nielsen, BC Hydro, Canada [U]

Dale Peleski, SUPERVALU Inc., MN [U]

Larry D. Pigg, Knox Company, AZ [M]

James T. Porter, Michigan State University, MI [M]
Rep. Ford Motor Company

Jemmel A. Pursoo, Science Applications International Corp., DC [SE]

Michael E. G. Schmidt, Weatogue, CT [SE]

Nathan O. Siu, U.S. Nuclear Regulatory Commission, DC [E]

Wayne R. Sohlman, Nuclear Electric Insurance Ltd., DE [I]

Karl K. Thompson, Florida State Fire Marshal's Office, FL [E]

Robert Upson, Southington Fire Department, CT [E]

John M. Watts, Jr., Fire Safety Institute, VT [SE]

Armin Wolski, Arup Fire, CA [SE]

David T. L. Yung, Yung and Associates, Canada [SE]

Alternates

Kumar R. Bhimavarapu, Factory Mutual Research Corporation, MA [I]
(Alt. to W. W. Doerr)

Joseph A. Cappuccio, The RJA Group, Inc., VA [SE]
(Voting Alt. to RJA Rep.)

Rodger Reiswig, Tyco/SimplexGrinnell, FL [M]
(Alt. to S. M. Clary)

Victoria B. Valentine, National Fire Sprinkler Association, Inc., NY [M]
(Alt. to R. P. Fleming)

Nonvoting

Luca Fiorentini, Tecsca S.p.A., Italy [SE]

Kristin Collette, NFPA Staff Liaison

This list represents the membership at the time the Committee was balloted on the final text of this edition. Since that time, changes in the membership may have occurred. A key to classifications is found at the back of the document.

NOTE: Membership on a committee shall not in and of itself constitute an endorsement of the Association or any document developed by the committee on which the member serves.

Committee Scope: This Committee shall have primary responsibility for documents covering the following: (1) frameworks that identify the relationships of fire safety concepts used for fire prevention and fire control, including codes, standards and recommended practices, and (2) frameworks that describe the properties of risk assessment methods for use in regulations.

Contents

Chapter 1 Administration	550- 4	5.3 Code Equivalency	550-10
1.1 Scope	550- 4	5.4 Building Management	550-11
1.2 Purpose	550- 4	5.5 Building Design	550-11
1.3 Application	550- 4	5.6 Building Change Management	550-11
Chapter 2 Referenced Publications	550- 4	5.7 Performance-Based Evaluation	550-11
2.1 General	550- 4	5.8 Research	550-11
2.2 NFPA Publications	550- 4	5.9 Other Applications	550-11
2.3 Other Publications	550- 4	Chapter 6 Limitations	550-11
2.4 References for Extracts in Advisory Sections. (Reserved)	550- 4	6.1 General	550-11
Chapter 3 Definitions	550- 4	6.2 Interaction of Concepts	550-11
3.1 General	550- 4	6.3 Time Factors	550-11
3.2 NFPA Official Definitions	550- 4	6.4 Objectives	550-11
3.3 General Definitions	550- 5	6.5 Quantification	550-11
3.4 Glossary Terms	550- 6	Chapter 7 Use of the Tree	550-12
Chapter 4 Structure of the Fire Safety Concepts Tree	550- 7	7.1 General	550-12
4.1 General	550- 7	7.2 Procedure	550-12
4.2 Logic Gates	550- 7	7.3 Example	550-12
4.3 Fire Safety Objectives	550- 7	Chapter 8 Reserved	550-14
4.4 Prevent Fire Ignition	550- 7	Chapter 9 Administrative Action	550-14
4.5 Manage Fire Impact	550- 8	9.1 Administrative Action Guide	550-14
Chapter 5 Applications	550-10	9.2 Administrative Structure	550-14
5.1 General	550-10	Annex A Explanatory Material	550-14
5.2 Communications	550-10	Annex B Informational References (Reserved)	550-14
		Index	550-15

NFPA 550
Guide to the
Fire Safety Concepts Tree

2012 Edition

IMPORTANT NOTE: This NFPA document is made available for use subject to important notices and legal disclaimers. These notices and disclaimers appear in all publications containing this document and may be found under the heading “Important Notices and Disclaimers Concerning NFPA Documents.” They can also be obtained on request from NFPA or viewed at www.nfpa.org/disclaimers.

NOTICE: An asterisk (*) following the number or letter designating a paragraph indicates that explanatory material on the paragraph can be found in Annex A.

Changes other than editorial are indicated by a vertical rule beside the paragraph, table, or figure in which the change occurred. These rules are included as an aid to the user in identifying changes from the previous edition. Where one or more complete paragraphs have been deleted, the deletion is indicated by a bullet (•) between the paragraphs that remain.

Information on referenced publications can be found in Chapter 2.

Chapter 1 Administration

1.1 Scope. This guide describes the structure, application, and limitations of the Fire Safety Concepts Tree.

1.2 Purpose. This guide is intended to provide tools to assist the Fire Safety Practitioner (e.g., Designer, Engineer, Code Official) in communicating fire safety and protection concepts. Its use can assist with the analysis of codes or standards and facilitate the development of performance-based designs.

1.3 Application. The Fire Safety Concepts Tree provides an overall structure with which to analyze the potential impact of fire safety strategies. It can identify gaps and areas of redundancy in fire protection strategies as an aid in making fire safety decisions. The use of the Fire Safety Concepts Tree should be accompanied by the application of sound fire protection engineering principles.

Chapter 2 Referenced Publications

2.1 General. The documents or portions thereof listed in this chapter are referenced within this guide and should be considered part of the recommendations of this document.

2.2 NFPA Publications. National Fire Protection Association, 1 Batterymarch Park, Quincy, MA 02169-7471.

NFPA 13, *Standard for the Installation of Sprinkler Systems*, 2010 edition.

NFPA 70[®], *National Electrical Code*[®], 2011 edition.

NFPA 75, *Standard for the Protection of Information Technology Equipment*, 2009 edition.

National Fire Protection Association “*Fire Safety Concepts Tree*”, 2002 edition.

2.3 Other Publications.

2.3.1 ANSI/UL Publications. Underwriters Laboratories Inc., 333 Pfingsten Road, Northbrook, IL 60062-2096.

ANSI/UL 913, *Intrinsically Safe Apparatus and Associated Apparatus for Use in Class I, II, and III, Division 1 Hazardous (Classified) Locations*, 2006, including revisions through June 3, 2010.

2.3.2 SFPE Publications. Society of Fire Protection Engineers, 7315 Wisconsin Avenue, Suite 1225 W, Bethesda, MD 20814.

SFPE Engineering Guide to Performance-Based Fire Protection, 2nd edition, 2007.

2.3.3 Other Publications.

Merriam-Webster’s Collegiate Dictionary, 11th edition, Merriam-Webster, Inc., Springfield, MA, 2003.

2.4 References for Extracts in Advisory Sections. (Reserved)

Chapter 3 Definitions

3.1 General. The definitions contained in this chapter apply to the terms used in this guide. Where terms are not defined in this chapter or within another chapter, they should be defined using their ordinarily accepted meanings within the context in which they are used. *Merriam-Webster’s Collegiate Dictionary*, 11th edition, is the source for the ordinarily accepted meaning. Descriptions of elements or concepts in the Fire Safety Concepts Tree have been provided to help convey the intent of the Systems Concepts Committee. These descriptions are intended as a guide to the thinking that framed the tree and should not restrict alternative interpretation of the concepts if such alternative descriptions are based on appropriate fire protection engineering principles. For example, it might be appropriate to a specific application of the tree to define “Prevent Fire Ignition” in terms of a flame height or a rate of heat release. At the same time, this is the only published source of definitions of these concepts and is, therefore, a step toward better communication through common understanding. Italicized terms in the descriptions of Fire Safety Concepts Tree elements are defined in Section 3.4, Glossary Terms.

3.2 NFPA Official Definitions.

3.2.1* Approved. Acceptable to the authority having jurisdiction.

3.2.2* Authority Having Jurisdiction (AHJ). An organization, office, or individual responsible for enforcing the requirements of a code or standard, or for approving equipment, materials, an installation, or a procedure.

3.2.3 Guide. A document that is advisory or informative in nature and that contains only nonmandatory provisions. A guide may contain mandatory statements such as when a guide can be used, but the document as a whole is not suitable for adoption into law.

3.2.4* Listed. Equipment, materials, or services included in a list published by an organization that is acceptable to the authority having jurisdiction and concerned with evaluation of products or services, that maintains periodic inspection of production of listed equipment or materials or periodic evaluation of services, and whose listing states that either the equipment, material, or service meets appropriate designated standards or has been tested and found suitable for a specified purpose.

3.2.5 Shall. Indicates a mandatory requirement.

3.2.6 Should. Indicates a recommendation or that which is advised but not required.

3.2.7 Standard. A document, the main text of which contains only mandatory provisions using the word “shall” to indicate requirements and which is in a form generally suitable for mandatory reference by another standard or code or for adoption into law. Nonmandatory provisions shall be located in an appendix or annex, footnote, or fine-print note and are not to be considered a part of the requirements of a standard.

3.3 General Definitions.

3.3.1 Accomplish by Administrative Action. Eliminate, *limit*, *control*, or accomplish other actions referenced in the Fire Safety Concepts Tree.

3.3.2 Apply Sufficient Suppressant (Automatically). *Automatically* perform *suppressive* action in response to *automatic* detection.

3.3.3 Apply Sufficient Suppressant (to Manually Suppress). *Manually* perform *suppressive* action given response to the proper site.

3.3.4 Automatically Suppress Fire. *Automatically* perform actions on a *fire* process in order to *limit* the growth of or extinguish the *fire*.

3.3.5 Cause Movement of Exposed. Initiate movement of the *exposed* to and along a safe path.

3.3.6 Communicate Signal. Transmit knowledge of a detected *fire* via human or *automatic* or a combination of human and *automatic* means to a responsible recipient of the information.

3.3.7 Confine/Contain Fire. Provide building construction features and built-in equipment in order to *limit* the *fire* or *fire products*, or both, to within the *barriers* surrounding the area where the *fire* originated.

3.3.8 Control Chemical Composition of Environment. Limit the quantity of oxidizer available for combustion or inhibit the chemical combustion process.

3.3.9 Control Combustion Process. *Control* the inherent *fire* behavior.

3.3.10 Control Fire by Construction. *Control* the growth of the *fire* and the movement of *fire products* by performing actions involving building construction features and built-in equipment without intentionally acting upon the inherent *fire* process.

3.3.11 Control Fuel (Manage Fire). Influence the combustion process by *pre-ignition control* of the inherent or situational characteristics of the *fuel*.

3.3.12 Control Fuel (Prevent Fire Ignition). *Limit* the characteristics and uses of *fuel(s)*.

3.3.13 Control Fuel Distribution. *Control* the arrangement of the *fuel* within its environment.

3.3.14 Control Fuel Ignitibility. *Control* the ease of *ignition* of *fuels* that are present.

3.3.15 Control Fuel Properties. *Control* the inherent properties of the *fuel*.

3.3.16 Control Fuel Transport. Prevent the *fuel* from moving to a location where *ignition* can result.

3.3.17 Control Heat-Energy Sources. *Limit* the characteristics and uses of *heat-energy sources*.

3.3.18 Control Heat-Energy Source Transport. Prevent the *heat-energy source* from moving to a location where an *ignition* can result.

3.3.19 Control Heat-Energy Transfer Processes. Alter the rate(s) at which the *fuel(s)* receives heat by *control* of the *heat transfer* mechanisms, such that *ignition* cannot result.

3.3.20 Control Movement of Fire. *Control* the movement of *fire* or *fire products*, or both, by providing and (where a normal functional necessity) activating building construction features and built-in equipment.

3.3.21 Control Physical Properties of Environment. Interfere in the combustion process through a heat transfer process.

3.3.22 Control Rate of Heat-Energy Release. *Control* the rate of thermal energy release of existing *heat-energy sources*.

3.3.23 Control Source-Fuel Interactions. *Control* the relationships of *source* and *fuel* so as to *limit* the *heat* communicated from the *source* to the *fuel* in order that *fuel* temperature remains below that required for *ignition*.

3.3.24 Control the Environment. *Control* the inherent or situational characteristics of the environment.

3.3.25 Decide Action. Determine a proper reaction given the communication of the existence of a *fire*.

3.3.26 Defend Against Fire Products. *Safeguard* the *exposed* using measures that prevent the presence of, or *control* the impact of, *fire products* at the *place*.

3.3.27 Defend Exposed in Place. *Defend* the *exposed* in the *place(s)* where they were located at the time of *ignition*.

3.3.28 Defend the Place (of the Exposed). *Defend* the *place* occupied by the *exposed*.

3.3.29 Detect Fire (Automatically). Identify the presence of *fire* without reliance on human observation.

3.3.30 Detect Fire (to Manually Suppress Fire). Identify the presence of *fire* either by human observation or by *automatic* mechanism(s).

3.3.31 Detect Need. Recognize that the *exposed* are susceptible to a harm.

3.3.32 Eliminate Fuel(s). Eliminate all *fuel*.

3.3.33 Eliminate Heat-Energy Source(s). Eliminate all places, materials, or objects at which thermal energy can originate or from which thermal energy can be transferred.

3.3.34 Limit Amount Exposed. *Limit* the maximum amount of *exposed*.

3.3.35 Limit Fuel Quantity. *Limit* the amount of *fuel* that potentially can become involved in *fire*.

3.3.36 Maintain Essential Environment. Ensure the sufficient prevention, removal, dissipation, or neutralization of adverse conditions, other than *fire* or *fire products*, or both, as experienced by the *exposed* within the *place*.

3.3.37 Manage Exposed. Coordinate measures directly involving the *exposed*.

3.3.38 Manage Fire. Coordinate measures for *control* of the *fire* or *fire products*, or both.

3.3.39 Manage Fire Impact. Coordinate measures to *limit* any harm directly or indirectly resulting from *fire* or *fire products*, or both.

3.3.40 Manually Suppress Fire. *Manually* perform actions on a *fire* process in order to *limit* the growth of or extinguish the *fire*.

3.3.41 Move Exposed. Safely relocate the *exposed* to safety.

3.3.42 Prevent Fire Ignition. Prevent initiation of destructive and *uncontrolled burning*.

3.3.43 Provide Movement Means. Provide the facilities necessary for a safe path through which the *exposed* can be relocated.

3.3.44 Provide Safe Destination (for the Exposed). Provide a safe location to receive the *exposed*.

3.3.45 Provide Separation (Fuel Transport). Provide and maintain a *separation* between the *fuel* and the *source* by measures acting only upon the *fuel*.

3.3.46 Provide Separation (Source Transport). Provide and maintain a *separation* between the *source* and the *fuel* by measures acting only upon the *source*.

3.3.47 Provide Structural Stability. Maintain the effectiveness of building construction features and built-in equipment.

3.3.48 Respond to Site. Respond to the proper site from which to *manually* initiate suppressive action.

3.3.49 Restrict Movement of Exposed. Prevent movement of the *exposed* beyond the boundaries of the *defended place*.

3.3.50 Safeguard Exposed. Act upon the *exposed* and the immediate surroundings of the *exposed* to *protect* the *exposed* against *fire impacts*.

3.3.51 Signal Need. Communicate the threat about the exposed.

3.3.52 Suppress Fire. Perform actions on a *fire* process in order to *limit* the growth of or extinguish the *fire*.

3.3.53 Vent Fire. Provide building construction features and built-in equipment that can *control fire* by removal of the *fire* or *fire products*, or both.

3.4 Glossary Terms. As in the case of the descriptions in Section 3.3, these definitions are subject to interpretation, but to a lesser degree.

3.4.1 Automatic (Automatically). Performing a function without the necessity of human intervention.

3.4.2 Barrier. A material obstacle (as opposed to *separation*).

3.4.3 Burning. Continuous combustion including smoldering.

3.4.4 Capacity (of a Place or Location). The maximum number or amount of *exposed* that a *place* or location can accommodate.

3.4.5 Capacity (of a Route or Path). The maximum flow rate of *exposed* that a route or path can handle.

3.4.6 Conduction. A transfer of heat from a region of higher temperature through a material by a molecular mechanism not involving bulk motion to a region of lower temperature.

3.4.7 Control. *Limit*, affect, or alter the referenced factor(s).

3.4.8 Convection. Transfer of heat by bulk motion of a fluid induced by mechanical devices or by gravitational effects due to nonuniform temperatures in the fluid.

3.4.9 Defend. As used in the Tree, *safeguard* the *exposed* using only those measures that prevent or *control fire impact* on the location of the *exposed*, without acting on the *fire* itself (see *safeguard*).

3.4.10 Exposed. Any or all of the items specified in the fire safety objectives (e.g., persons, pieces of property, activities, or other valuable considerations).

3.4.11 Fire. Any instance of destructive and *uncontrolled burning*, including explosions.

3.4.12 Fire Impact. A term used to denote the direct or indirect results of *fire*.

3.4.13 Fire Products. As used in the Tree, flame, heat, smoke, and gas.

3.4.14 Fire Safety. The measures taken to *protect* the *exposed* so as to satisfy a specified objective.

3.4.15 Fuel. A substance that yields heat through combustion.

3.4.16 Heat-Energy. A term used to indicate that only the thermal forms of energy are of concern.

3.4.17 Heat-Energy Source (Source). Any *place*, material, or object at which *heat-energy* can originate or from which *heat-energy* can be transferred.

3.4.18 Heat-Energy Transfer Process. The exchange of thermal energy from the *source* to the *fuel* by the mechanisms of *conduction*, *convection*, or *radiation*, or all three.

3.4.19 Ignitibility. The ease with which *fuel* undergoes *ignition*.

3.4.20 Ignition. The momentary event when *fire* first occurs.

3.4.21 Immobilize. Fix in place, so that no movement can occur.

3.4.22 Limit. Prescribe a minimum or maximum size, quantity, number, mass, extent, or other dimension.

3.4.23 Manage. Coordinate broadly ranging available methods toward accomplishment of objectives.

3.4.24 Manual. Employing human action.

3.4.25 Place. An area within designated boundaries containing *exposed*.

3.4.26 Protect. The use of any or all available measures to *limit fire impact*.

3.4.27 Radiation. The combined process of emission, transmission, and absorption of energy traveling by electromagnetic wave propagation (e.g., infrared radiation) between a region of higher temperature and a region of lower temperature.

3.4.28 Safe Destination. A *protected place* of adequate capacity.

3.4.29 Safeguard. As used in the Tree, to *protect* the *exposed* by using only those measures directly involving the *exposed*, without acting on the *fire* itself (see *defend*).

3.4.30 Separation. An intervening space (as opposed to *barrier*).

3.4.31 Source. See 3.4.17, *Heat-Energy Source*.

3.4.32 Suppression. Extinguishment or active *limitation* of *fire* growth.

3.4.33 Thermal Energy. See 3.4.16, *Heat-Energy*.

3.4.34 Transport. The movement of either the *heat-energy source* or the *fuel*.

Chapter 4 Structure of the Fire Safety Concepts Tree

4.1 General. The Fire Safety Concepts Tree shows relationships of fire prevention and fire damage control strategies.

4.1.1 Fire safety features, such as construction type, combustibility of contents, and protection devices, and characteristics of occupants traditionally have been considered independently of one another. This can lead to unnecessary duplication of protection. On the other hand, gaps in protection or lack of desired redundancy can exist when these features are not coordinated.

4.1.2 The distinct advantage of the Fire Safety Concepts Tree is its systems approach to fire safety. Rather than considering each feature of fire safety separately, the Fire Safety Concepts Tree examines all of them and demonstrates how they influence the achievement of fire safety goals and objectives.

4.2 Logic Gates. The Fire Safety Concepts Tree uses logic gates to show a hierarchical relationship of fire safety concepts. There are two types of logic gates in the Fire Safety Concepts Tree — “or” gates and “and” gates.

4.2.1 An “or” gate, represented by a circle with a plus sign in it, indicates that any of the concepts below it will cause or have as an outcome the concept above it. For example, in Figure 4.2.1(a), concept A is achieved if any one of the concepts B₁, B₂, or B₃ is achieved. Figure 4.2.1(b) presents a Venn diagram that illustrates the “or” gate logic, where achievement of any concept B will achieve concept A.

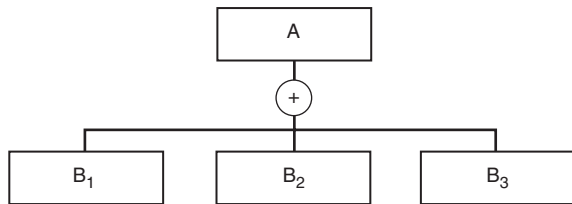


FIGURE 4.2.1(a) Example of an “Or” Gate.

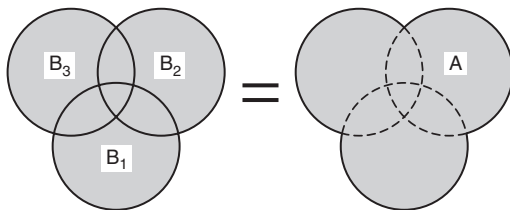


FIGURE 4.2.1(b) Venn Diagram for an “Or” Gate.

4.2.2 An “and” gate is represented by a circle with a dot in the middle. This indicates that all of the concepts below the “and” gate are needed to achieve the concept above the gate. For example, in Figure 4.2.2(a), concept A can be achieved only if all three concepts B₁, B₂, and B₃ are achieved. Figure 4.2.2(b) presents a Venn diagram that illustrates the “and” gate logic, where achievement of concept A requires achievement of all three B concepts.

4.3 Fire Safety Objectives. The top box of the Fire Safety Concepts Tree is labeled “Fire Safety Objective(s).” The logic of the tree is directed toward the achievement of specified objectives.

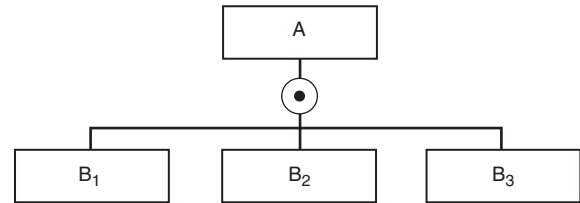


FIGURE 4.2.2(a) Example of an “And” Gate.

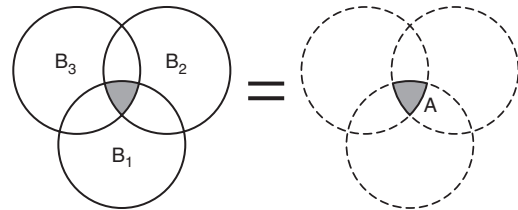


FIGURE 4.2.2(b) Venn Diagram for an “And” Gate.

Strategies for achieving fire safety objectives are divided into two categories: “Prevent Fire Ignition” and “Manage Fire Impact.” These concepts are connected through an “or” gate to the fire safety objective. (See Figure 4.3.) Thus, the logic of the tree is that fire safety objectives can be accomplished by preventing a fire from starting or by managing the impact of the fire. Figure 4.3 presents the top gates of the concept tree with selected lower-tiered gates. The “or” gate is the “inclusive or,” which means that all the concepts below the gate can be included, but only one of them is necessary. In theory, this implies that either prevention or management alone could be followed to achieve the objective. However, theoretically, it is not possible to achieve perfect prevention or management. In practice, principles of both fire prevention and fire impact management usually are applied together. The likelihood of achieving fire safety objectives is increased by the presence of both principles. This practice is an example of reliability through redundancy (e.g., using both a belt and suspenders to hold up a pair of pants). Thus, “or” gates in the Fire Safety Concepts Tree indicate where reliability of achieving an objective is improved by implementation of more than one strategy. It is also important to note that the inputs to an “or” gate are exhaustive. This means they encompass every possible way of achieving the indicated output.

4.4 Prevent Fire Ignition. The “Prevent Fire Ignition” branch of the Fire Safety Concepts Tree includes measures representative of a fire prevention code. Fire safety measures included in this branch of the tree require continuous monitoring to ensure their effectiveness. The responsibility, therefore, is more the owner’s or the occupant’s than the designer’s.

4.4.1 Ignition results from a heat source in contact with, or sufficiently close to, a combustible substance. Thus, “Prevent Fire Ignition” branches into “Control Heat-Energy Source(s),” “Control Source-Fuel Interactions,” or “Control Fuel” (see Figure 4.4.1). Again, the “or” gate indicates that any one of these three strategies, if carried out fully, is sufficient to prevent ignition, but use of more than one will improve the chances of prevention. For example, control of heat-energy sources can be achieved by eliminating them. This also achieves the prevention of fire ignition, and no other strategy is needed. However, there is a reliability associated with the strategy of eliminating all heat-energy sources (i.e., it is possible that somehow an ignition source might find its

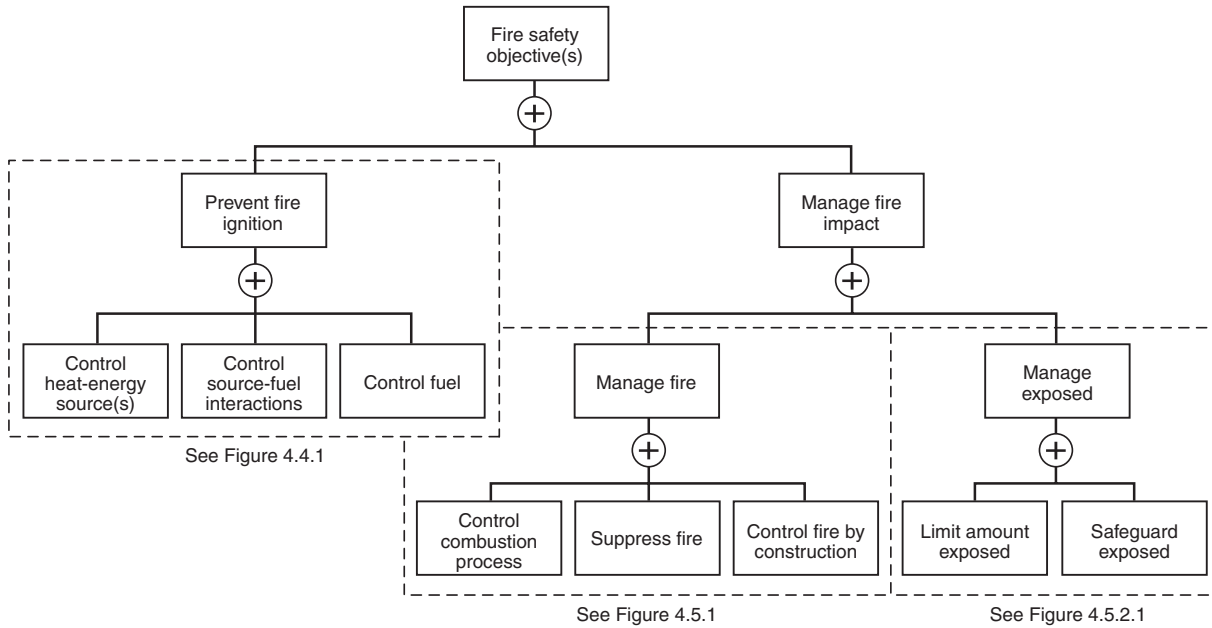


FIGURE 4.3 Top Gates of the Fire Safety Concepts Tree with Selected Lower-Tiered Gates.

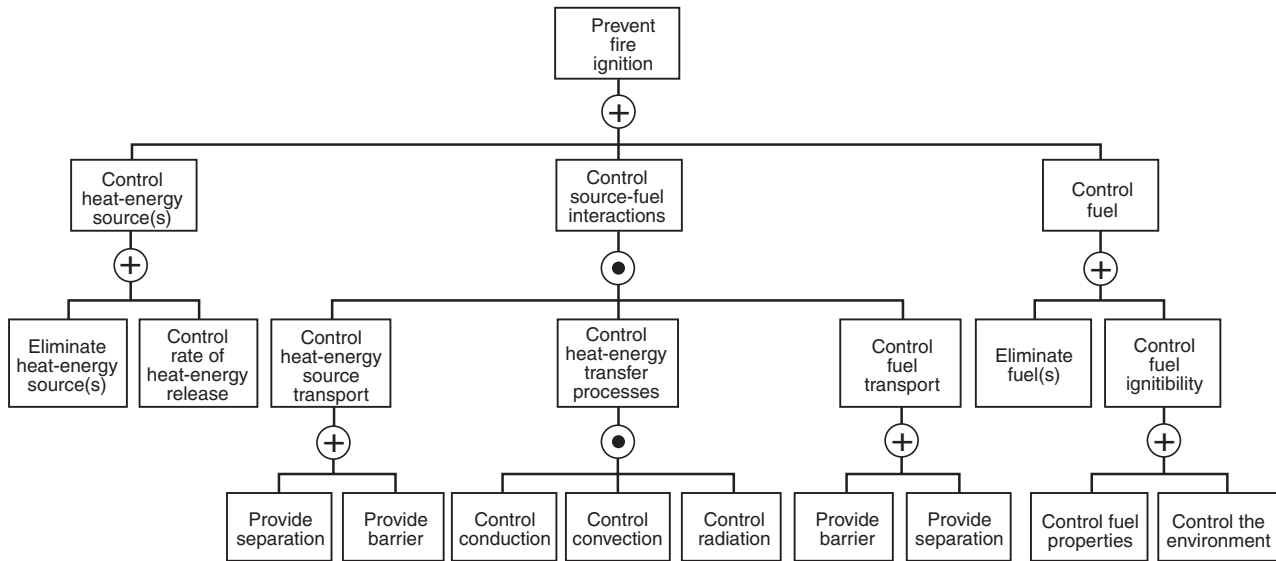


FIGURE 4.4.1 “Prevent Fire Ignition” Branch of the Fire Safety Concepts Tree.

way into the protected area). If the control fuel strategy also is applied, then the reliability that ignition will be prevented is increased.

4.4.2 “Control Source-Interactions” is the output of an “and” gate with input strategies of “Control Heat-Energy Source Transport,” “Control Heat-Energy Transfer Processes,” and “Control Fuel Transport.” On the printed tree, the symbol for an “and” gate is a circle with a dot in the middle. The “and” gate is the logic operation that indicates all the inputs must coexist simultaneously in order to produce the output. This means that the heat source should not be allowed to move too close to the fuel, excessive heat should be prevented from being transferred to the fuel, and the fuel should not be allowed

to move too close to the heat source. All these concepts are necessary to achieve control of source-fuel interactions; there is no redundancy. “And” gates in the Fire Safety Concepts Tree represent checklists of items that are necessary to achieve the output objective or strategy.

4.4.3 The plus and dot symbols used for “or” gates and “and” gates (see Figure 4.4.3) also are used in fault trees. They are the standard symbols for these logic operations, which are used in electronic circuit diagrams and Boolean algebra. They are derived from the algebra of probabilities.

4.5 Manage Fire Impact. The “Manage Fire Impact” side of the tree has two major branches as inputs to an “or” gate: “Manage

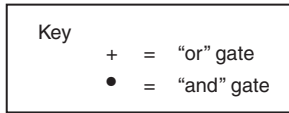


FIGURE 4.4.3 Logic Symbols Used in the Fire Safety Concepts Tree.

Fire” and “Manage Exposed” (see Figure 4.5). This is the basic approach to loss control (i.e., to limit the magnitude of the hazard or to minimize the effects).

4.5.1 Manage Fire. The objectives of the “Manage Fire” strategy are to reduce hazards associated with fire growth and spread, and to thereby reduce the impact of the fire. Approaches to fire management are as follows:

- (1) Control the rate of production of smoke and heat through alteration of the fuel or the environment.

- (2) Control the combustion process by manual or automatic suppression.
- (3) Control fire propagation with venting or containment, or both (see Figure 4.5.1).

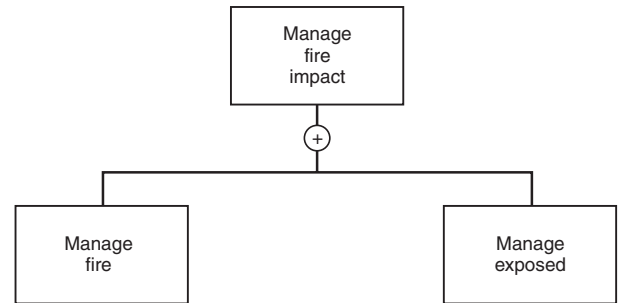


FIGURE 4.5 Major Branches of “Manage Fire Impact.”

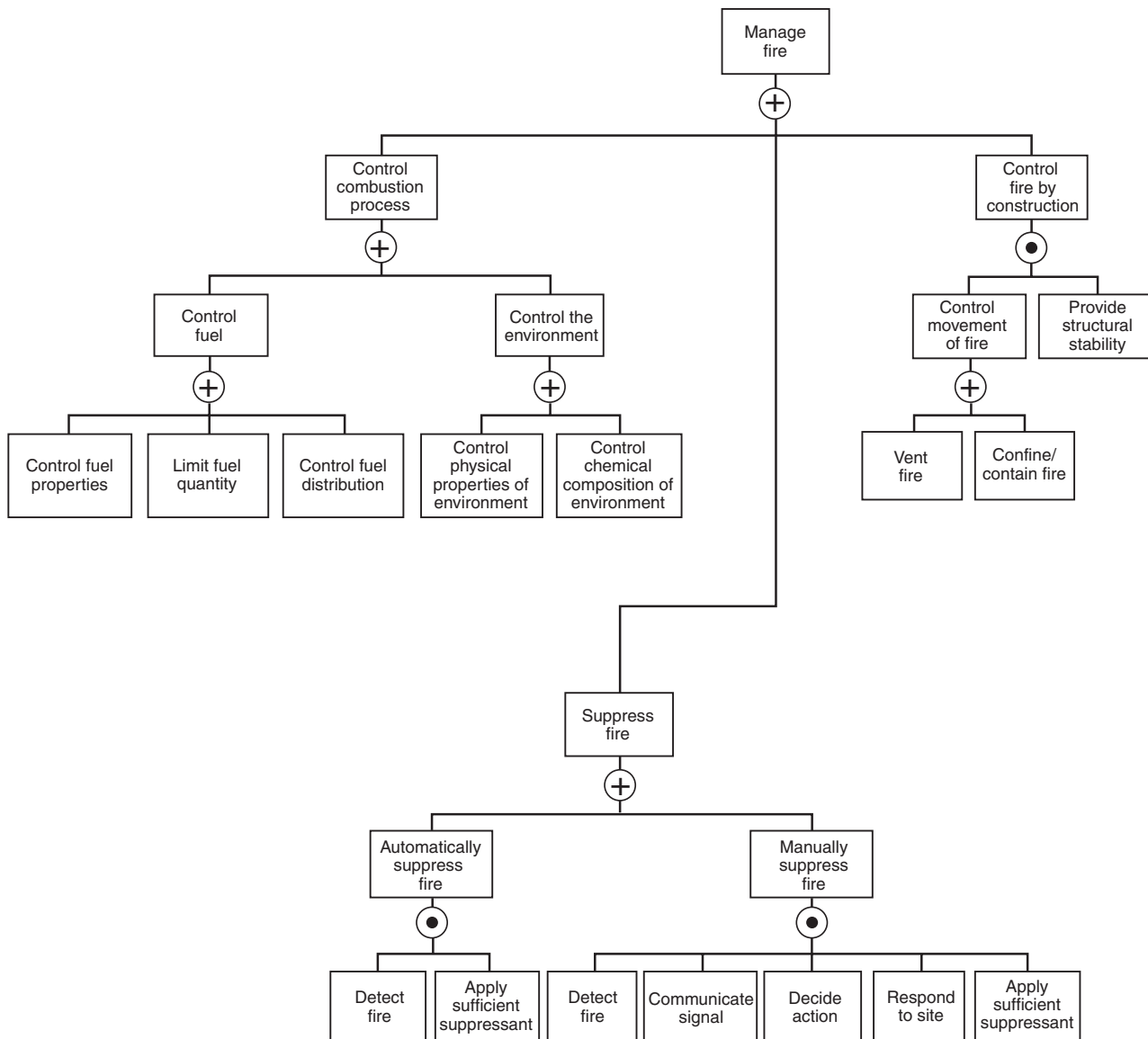


FIGURE 4.5.1 “Manage Fire” Branch of Fire Safety Concepts Tree.

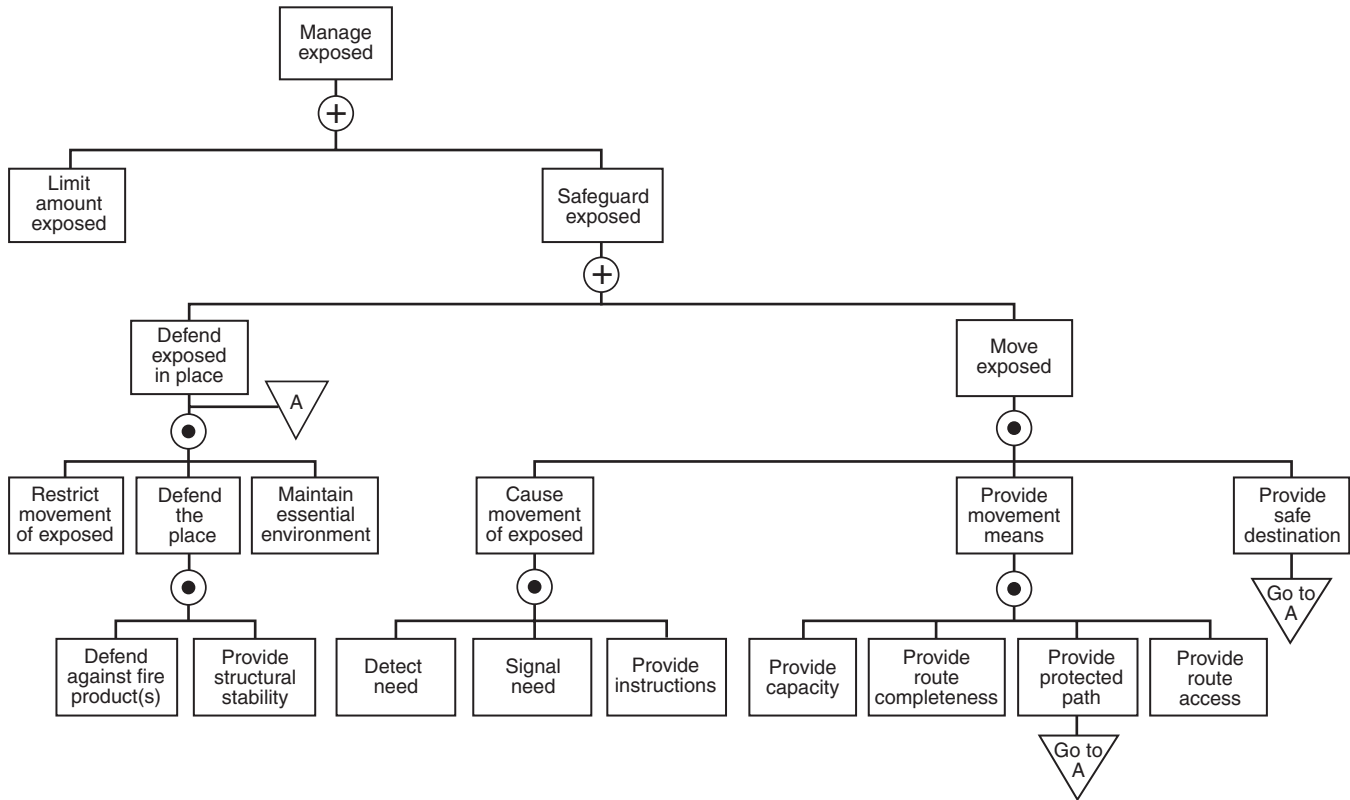


FIGURE 4.5.2.1 “Manage Exposed” Branch of Fire Safety Concepts Tree.

4.5.1.1 Again, the “or” gate indicates that these strategies can be applied simultaneously for increased reliability of managing the fire. Note that controlling fire propagation with venting or curtains includes managing fire products such as smoke.

4.5.2 Manage Exposed.

4.5.2.1 “Manage Exposed” means to coordinate measures involving any or all of the items specified in the fire safety objectives (e.g., people, property, activities, or other valuable considerations). The “Manage Exposed” branch is achieved by either limiting the number of individuals and amount of property that are exposed or safeguarding all persons and property subject to exposure (see Figure 4.5.2.1). In the case of property or immobile persons, such as nonambulatory hospital patients, the exposed is safeguarded most often by defending the occupied space from fire exposure.

4.5.2.2 “Hardening against fire” is another term for the strategy of making the exposed resistant to the effects of fire. For more mobile occupants, the most common strategy for safeguarding the exposed is to relocate the exposed while protecting the route for the duration of transit. This includes smoke management as described by the “Vent Fire” and “Confine/Contain Fire” elements under the “Control Movement of Fire” branch of the tree.

4.5.2.3 The transfer symbol labeled “entry point” in the key to the Fire Safety Concepts Tree is shown in Figure 4.5.2.3. This transfer symbol indicates where portions of the tree are repeated. In Figure 4.5.2.1, the portion of the tree under the element “Defend Exposed in Place” is repeated under the elements “Provide Safe Destination” and “Provide Protected Path.”

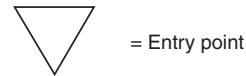


FIGURE 4.5.2.3 Transfer Symbol.

Chapter 5 Applications

5.1 General. The Fire Safety Concepts Tree is a general qualitative guide to fire safety. It is a flexible tool that can be used in a number of different ways.

5.2 Communications. Perhaps the most important use of the tree is for communication with architects and other professionals involved in building design and management. Codes and standards are not intended to be tutorial; they presume a significant level of comprehension of the principles of fire protection engineering. The Fire Safety Concepts Tree is a simple visual representation of the total concept of fire safety incorporated in codes and standards. It can be used as a means of communication between fire safety specialists and others to help identify the role of specific requirements. The tree should be considered as a first level of education in fire protection engineering (i.e., as an introduction to the full breadth of the subject).

5.3 Code Equivalency. A more specific Fire Safety Concepts Tree application is as an adjunct to building codes. An important feature in building codes is the provision for “Equivalencies.” Equivalency clauses state that alternatives

to specified code requirements are acceptable if they provide a degree of fire safety equivalent to that of the code. The Fire Safety Concepts Tree provides a guide to identifying design strategies that may provide an equivalent of safety. “Or” gates indicate where more than one means of accomplishing a strategy in the tree is possible. A decrease in the quality or quantity of one input to an “or” gate can be balanced by an increase in another input to the same gate. Determination as to whether a particular design strategy provides an equivalent level of safety would require an engineering analysis; however, the tree provides guidance on which concepts to assess. The *SFPE Engineering Guide to Performance-Based Fire Protection* identifies a process for developing and evaluating trial design strategies to determine whether they provide a satisfactory level of equivalency.

5.4 Building Management. The Fire Safety Concepts Tree can be used to assess fire safety in an existing building. Inputs to “and” gates in the tree comprise a checklist of required components that should be maintained in order to accomplish their respective strategies. Thus, in a structure for which particular strategies are identified as necessary to achieve fire safety objectives, appraisal of inputs to those strategies constitutes a fire safety assessment of the structure.

5.5 Building Design. The Fire Safety Concepts Tree can be used as a design tool. Once basic fire safety objectives for a building are identified, the designer can analyze the alternative tree paths through which these objectives can be met. Examination of the “or” gates in the tree indicates where alternative strategies exist and where redundancies can be built into the design to improve reliability. The tree then can be used to communicate the fire safety concepts of the design to stakeholders. The *SFPE Engineering Guide to Performance-Based Fire Protection* identifies a process for developing and evaluating trial design strategies to determine whether they provide a satisfactory level of fire safety.

5.6 Building Change Management. The Fire Safety Concepts Tree can be used to evaluate and manage changes in a building’s fire safety performance that can result from changes in occupancy, use, or fire protection features. It is particularly important to have a means of evaluating the impact of changes in a building on critical fire safety features and design assumptions that could be affected during the life of the building when designed with a performance-based methodology. For example, a tree documents the required components of the original design and is a rational tool for assessing the impact of changes to these components. Alternative strategies can be examined within the context of the tree, or such alternative strategies can be further evaluated with other risk assessment or hazard assessment tools. The tree could then be revised accordingly and remain as an ongoing change management tool.

5.7 Performance-Based Evaluation. The purpose of performance-based fire safety evaluation is to ensure attainment of a set of stated goals. Fire safety is an overall outcome to be achieved with regard to fire.

5.7.1 It is not possible to directly implement fire safety goals. In order to assess the degree of achievement of a goal, intermediate measures such as performance objectives are needed. In general, objectives define a series of actions necessary to make the achievement of a goal much more likely.

5.7.2 In most cases, the performance objectives are still too indeterminate, so they must be further broken down until an acceptable degree of observable or measurable detail is achieved.

This process of analyzing objectives and decomposing them is effectively represented by the Fire Safety Concepts Tree, where each of the specific fire safety concepts is explicitly linked to the higher level objective or goal.

5.8 Research. Another application of the Fire Safety Concepts Tree is as a research tool. The tree could also be used to classify fire safety strategies as a guide for research activities.

5.9 Other Applications. The applications described throughout this chapter represent only some of the more common uses of the Fire Safety Concepts Tree. In addition, the tree could be used as a guide to code organization, standards organization, information retrieval, curriculum development, marketing, indexing, and fire investigation.

Chapter 6 Limitations

6.1 General. The Fire Safety Concepts Tree has met with some success as a comprehensive qualitative guide to fire safety. It allows identification of alternatives and combinations of fire safety measures as well as the identification of redundancies and gaps. However, there are significant limitations to its application.

6.2 Interaction of Concepts. The tree structure does not adequately consider multiple interactions of fire safety concepts (i.e., concepts that are inputs to more than one strategy). This is most apparent in regard to the combined contribution of detection systems to the management of fire and to the management of the exposed. The logic tree approach does not portray lateral influences of fire safety components (i.e., concepts at the same level in the tree that affect each other).

6.3 Time Factors.

6.3.1 One of the major limitations of fire safety trees is the lack of chronological sequences. Fire safety depends on the elimination of combustion products and people coexisting in the same place at the same time. That is, avoidance of fire casualties depends on the avoidance of exposure in both space and time. One can either endure a fire or escape it. To escape a fire means to move faster than the fire and its products of combustion. The temporal aspect of fire development is not represented in the Fire Safety Concepts Tree.

6.3.2 The Fire Safety Concepts Tree does not indicate whether inputs to “and” gates need to be sequential. For example, the basic elements that are inputs to “Manually Suppress Fire” have an implied order in which they should occur. No distinction is made to identify “and” gates where this implicit order exists.

6.4 Objectives. The Fire Safety Concepts Tree is limited in its ability to deal simultaneously with multiple objectives. There can be 10 or more distinct fire safety objectives for buildings, each requiring a different course of action. Although a series of trees can be used to evaluate the success of achieving each objective individually, there is no convenient way to deal with multiple objectives collectively.

6.5 Quantification. The Fire Safety Concepts Tree is similar in appearance to a fault tree, a graphic tool used in reliability analysis. However, the boxes in a fault tree represent events with specific probabilities of occurrence while the concepts in the Fire Safety Concepts Tree are more abstract and generally do not lend themselves to quantification.

Chapter 7 Use of the Tree

7.1 General. There are many methods for using the Fire Safety Concepts Tree. These range from cursory visual examination through systematic consideration of each concept to adaptation for quantitative analysis. This section illustrates one systematic approach to qualitative assessment of fire safety.

7.2 Procedure. The procedure in 7.2.1 through 7.2.5 is a step-by-step approach for one way in which the Fire Safety Concepts Tree can be used to evaluate fire safety. It should not be inferred that this is the only way the tree can be used. As indicated previously, there is a wide variety of applications and methods for using the Fire Safety Concepts Tree.

7.2.1 Step One. Define the objectives. This is the most important step in making any decision. This question should be asked: “What do I want the fire safety strategies to achieve?” (e.g., provide a high level of assurance that operations will not be interrupted, meet the intention of the code, minimize the possibility of a multiple-fatality fire).

7.2.2 Step Two. Assess each of the lowest elements in the tree (i.e., all elements that do not have any inputs). For the particular structure in question, estimate the extent to which each basic element is present as a fire safety feature. For example, consider a simple scale made up of the following four categories, where “standard” indicates an appropriate level of consensus:

- (1) Nonexistent
- (2) Below standard
- (3) Standard
- (4) Above standard

7.2.2.1 Next, label each of the lowest elements according to its applicable category. Evaluation should include consideration of the reliability of fire safety systems to perform as designed.

7.2.3 Step Three. Where the lowest level elements are inputs to an “or” gate, the value of the output will be at least as high as the highest valued input. For example, if compliance with the strategy “Eliminate Heat-Energy Source(s)” is only partial, it might be evaluated as below standard. Similarly, if the only heat-energy source is electricity and the installation is in accordance with *NFPA 70, National Electrical Code*, “Control Rate of Heat-Energy Release” could qualify as standard. Therefore, “Control Heat-Energy Source(s)” as the output of an “or” gate would be rated as at least standard.

7.2.4 Step Four. Where the lowest level elements are inputs to an “and” gate, the quality of the output should be limited to that of the least-valued input. For example, consider an automatic sprinkler system with appropriately temperature-rated sprinklers spaced according to *NFPA 13, Standard for the Installation of Sprinkler Systems*. The strategy “Detect Fire” then could be considered standard. If, however, the water supply to the sprinkler system is inadequate, “Apply Sufficient Suppressant” would be considered below standard and, therefore, “Automatically Suppress Fire” as an output of an “and” gate also would be considered below standard. Thus, the “and” gate represents a situation where the chain is only as strong as its weakest link. An “or” gate, on the other hand, is analogous to a pair of pants held up by both belt and suspenders. The pants will not fall down if either one breaks.

7.2.5 Step Five. Proceed “up” the tree in this manner, qualifying each output on the basis of the quality of the inputs and the logic gate that connects them. When each element has been evaluated, the entire tree can be examined to determine where improvements should be made to meet fire safety objectives. Alternatively, in the design stage, move down the tree, making certain that strategies are present that will yield the desired objectives. Evaluation should include reliability assessment, such as examining the effect of system failures on achievement of objectives. For example, what happens to the various outputs if the alarm system fails (i.e., “Signal Need” is rated nonexistent)?

7.3 Example. The use of the Fire Safety Concepts Tree in this manner is illustrated by examining fire prevention in a hypothetical computer facility. That is, consideration is given only to the “Prevent Fire Ignition” branch of the tree, demonstrating how a partial tree can be used for evaluation of a particular strategy.

7.3.1 Objectives. In this example, the Fire Safety Concepts Tree is used to identify a level of fire prevention for a data processing center and to identify ways to raise the level of fire prevention in the facility. Concern for the reliability of the fire prevention design also is addressed. In other words, the identified fire safety objectives are those implicit in national codes and standards, and the most effective ways to exceed this identified level of fire prevention are sought.

7.3.2 Heat-Energy Sources.

7.3.2.1 On the left side of the “Prevent Fire Ignition” branch, there are two basic strategies or lower elements dealing with ignition sources. The first strategy is “Eliminate Heat-Energy Source(s).” In a computer facility, it is standard practice to prohibit heating appliances, smoking, and any other open-flame type of ignition source. Provisions should include a security program with adequate attention to the potential for arson. If these features are satisfactorily in place, this strategy can be assessed as standard.

7.3.2.2 To improve on this level of assessment necessitates elimination of every potential ignition source including electricity. It is, of course, not feasible to eliminate completely the possibility of electrical ignition sources in a computer facility where electrically powered equipment is the nature of the occupancy. It is, however, possible to reduce the likelihood of an ignition by controlling the use of electricity. One way to do this is to conform to *NFPA 70, National Electrical Code*, Article 645, “Electronic Computer/Data Processing Equipment.” If these measures are taken, the strategy “Control Rate of Heat-Energy Release” can be considered as standard. It would be technically possible, though perhaps not practical, to improve the value of this element by using an intrinsically safe electrical system such as described in *ANSI/UL 913, Intrinsically Safe Apparatus and Associated Apparatus for Use in Class I, II, and III, Division 1 Hazardous Locations* (an intrinsically safe electrical system is one that does not release sufficient energy to ignite the combustibles in the environment).

7.3.3 Fuel.

7.3.3.1 Consider the “Control Fuel” branch of “Prevent Fire Ignition.” Common combustibles in computer facilities include paper, plastic insulation on wiring, certain components or parts of equipment, and plastic media such as tape and disks. Chapter 6 of *NFPA 75, Standard for the Protection of Information Technology Equipment*, identifies materials and

equipment that might be permitted in a computer room. Compliance with NFPA 75 can be considered as a standard level for the strategy “Eliminate Fuel(s).”

7.3.3.2 Parts of Chapter 7 of NFPA 75, *Standard for the Protection of Information Technology Equipment*, address the limits of flame spread and flash point for materials used in computer equipment. Compliance with these requirements can be construed as a standard level of the strategy “Control Fuel Properties.”

7.3.3.3 Avoidance of flammable gases and oxygen-enriched atmospheres can be considered as standard for “Control the Environment,” although these ordinarily are not concerns in a computer facility. An above-standard strategy is a habitable atmosphere that does not support combustion, as suggested for spacecraft and similar occupancies.

7.3.4 Source-Fuel Interactions. Control of heat transfer between ignition sources and combustibles is not a common strategy in computer facilities. It is very difficult to isolate combustible media and components from the electrical power without significant alteration of construction or procedures. For example, the electrical insulating properties of polyvinyl-chloride make it a most efficient material to have in contact with electrical conductors, even though it is combustible. Thus, all of the basic strategies under the “Control Source-Fuel Interactions” branch could be classified as nonexistent. Note that, even though certain valuable media are sometimes stored in a fire-resistive container, this is primarily a strategy for managing the exposed, which is not likely to contribute significantly to preventing ignition.

7.3.5 Results. The results of this process are shown in Figure 7.3.5. Now that a qualitative assessment of each lowest element in the “Prevent Fire Ignition” branch has been made, it

is possible to follow the procedures of steps three and four to evaluate the results. Input of a standard element (in this case, there are two) to “Control Heat-Energy Source(s)” indicates that the output element also is standard. On the other side, standard inputs also indicate that “Control Fuel” is standard. With only nonexistent elements as inputs, “Control Source-Fuel Interactions” is nonexistent. Then, the final “or” gate leading to “Prevent Fire Ignition” has two standard inputs, so the output is standard (only one standard input is needed for the output to be considered standard, since it is an “or” gate).

7.3.5.1 The results shown on the diagram can lead to the following conclusions:

- (1) Prevention of fire in the computer facility meets a level arbitrarily identified as standard, and reliability is provided by redundant (duplicate) standard inputs to the “or” gate that yield “Prevent Fire Ignition.”
- (2) A standard level of “Control Source-Fuel Interactions” provides a third degree of redundancy.
- (3) Ways exist to improve certain elements to above standard, but all the current standard elements need to be improved to provide consistent reliability.

7.3.5.2 This same process could be applied to other branches or to the entire Fire Safety Concepts Tree. However, it is important to keep in mind that this approach is not a general solution to any fire problem. The Fire Safety Concepts Tree provides support for a specific decision. It is a tool for examining a particular situation to discover possible alternatives, but it does not condone such alternatives automatically. Each situation is unique, and the tree can be used to provide a structure for an analysis based on accepted principles of fire protection engineering.

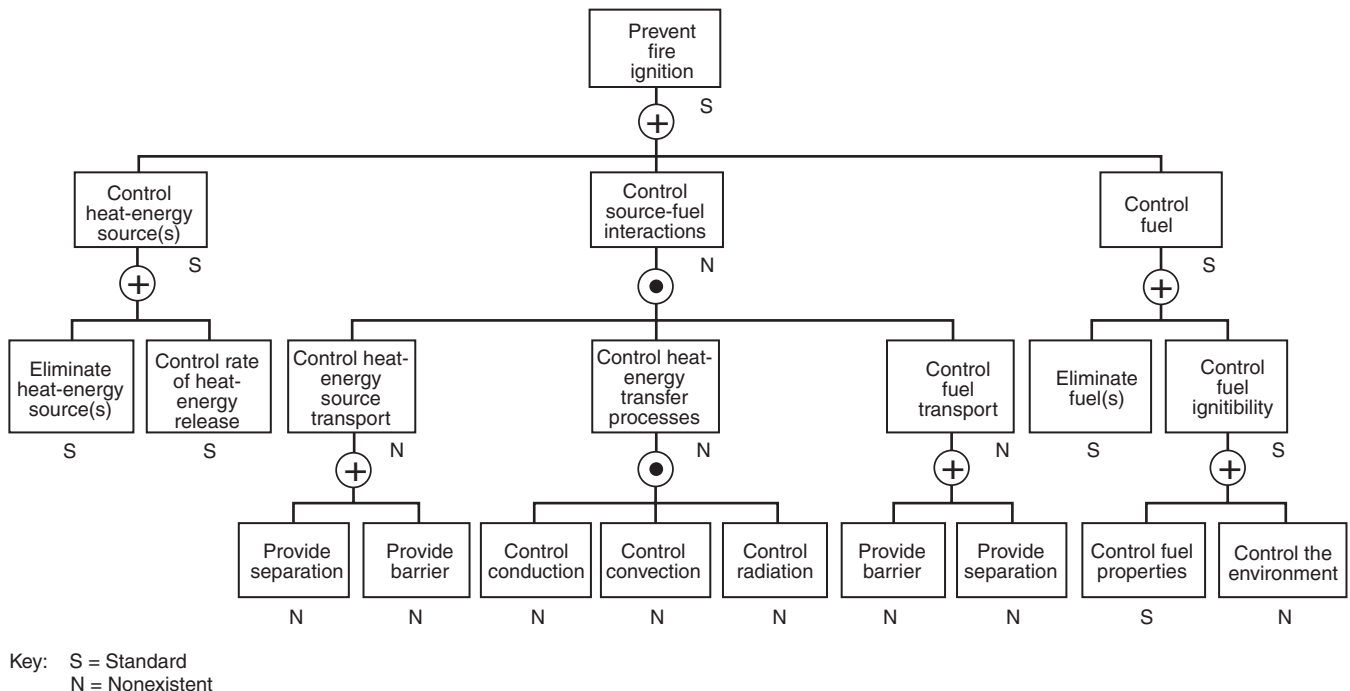


FIGURE 7.3.5 Fire Prevention in a Computer Facility.

Chapter 8 Reserved

Chapter 9 Administrative Action

9.1 Administrative Action Guide. The Administrative Action Guide uses the logic format to show various ways to regulate or promote fire safety strategies. It is intended as a generalized guide to encourage any of the measures described in the Fire Safety Concepts Tree.

9.2 Administrative Structure.

9.2.1 The Fire Safety Concepts Tree is a branching chain of goal-means relationships. However, beyond the tree, an infrastructure exists in the form of an administrative scheme or social organization that is necessary to achieve the means deemed appropriate by the tree. Such an administrative structure is shown in Figure 9.2.1.

9.2.2 This administrative scheme could pertain to any means throughout the tree, since it represents only a generalized conceptual scheme (entirely nontechnical) for facilitating a means to achieve goals.

Annex A Explanatory Material

Annex A is not a part of the recommendations of this NFPA document but is included for informational purposes only. This annex contains explanatory material, numbered to correspond with the applicable text paragraphs.

A.3.2.1 Approved. The National Fire Protection Association does not approve, inspect, or certify any installations, procedures, equipment, or materials; nor does it approve or evaluate testing laboratories. In determining the acceptability of installations, procedures, equipment, or materi-

als, the authority having jurisdiction may base acceptance on compliance with NFPA or other appropriate standards. In the absence of such standards, said authority may require evidence of proper installation, procedure, or use. The authority having jurisdiction may also refer to the listings or labeling practices of an organization that is concerned with product evaluations and is thus in a position to determine compliance with appropriate standards for the current production of listed items.

A.3.2.2 Authority Having Jurisdiction (AHJ). The phrase “authority having jurisdiction,” or its acronym AHJ, is used in NFPA documents in a broad manner, since jurisdictions and approval agencies vary, as do their responsibilities. Where public safety is primary, the authority having jurisdiction may be a federal, state, local, or other regional department or individual such as a fire chief; fire marshal; chief of a fire prevention bureau, labor department, or health department; building official; electrical inspector; or others having statutory authority. For insurance purposes, an insurance inspection department, rating bureau, or other insurance company representative may be the authority having jurisdiction. In many circumstances, the property owner or his or her designated agent assumes the role of the authority having jurisdiction; at government installations, the commanding officer or departmental official may be the authority having jurisdiction.

A.3.2.4 Listed. The means for identifying listed equipment may vary for each organization concerned with product evaluation; some organizations do not recognize equipment as listed unless it is also labeled. The authority having jurisdiction should utilize the system employed by the listing organization to identify a listed product.

Annex B Informational References (Reserved)

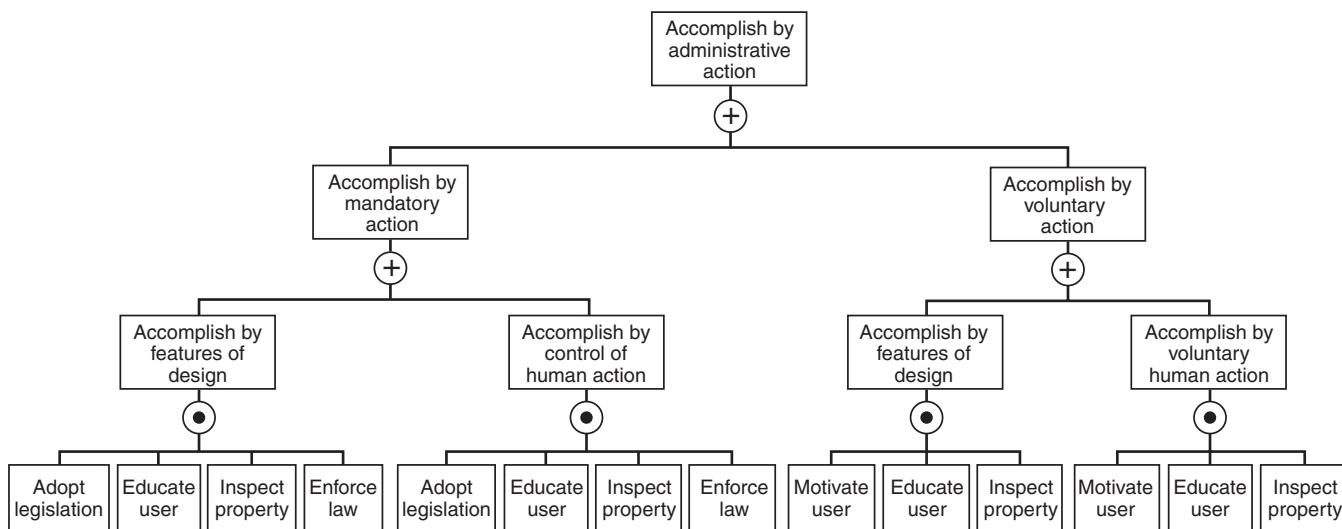


FIGURE 9.2.1 Administrative Action Guide.

Index

Copyright © 2012 National Fire Protection Association. All Rights Reserved.

The copyright in this index is separate and distinct from the copyright in the document that it indexes. The licensing provisions set forth for the document are not applicable to this index. This index may not be reproduced in whole or in part by any means without the express written permission of NFPA.

-A-		
Accomplish by Administrative Action		
Definition.....	3.3.1	
Administration	Chap. 1	
Application.....	1.3	
Purpose.....	1.2	
Scope.....	1.1	
Administrative Action	Chap. 9	
Administrative Action Guide.....	9.1	
Administrative Structure.....	9.2	
Applications	Chap. 5	
Building Change Management.....	5.6	
Building Design.....	5.5	
Building Management.....	5.4	
Code Equivalency.....	5.3	
Communications.....	5.2	
General.....	5.1	
Other Applications.....	5.9	
Performance-Based Evaluation.....	5.7	
Research.....	5.8	
Apply Sufficient Suppressant (Automatically)		
Definition.....	3.3.2	
Apply Sufficient Suppressant (to Manually Suppress)		
Definition.....	3.3.3	
Approved		
Definition.....	3.2.1, A.3.2.1	
Authority Having Jurisdiction (AHJ)		
Definition.....	3.2.2, A.3.2.2	
Automatic (Automatically)		
Definition.....	3.4.1	
Automatically Suppress Fire		
Definition.....	3.3.4	
-B-		
Barrier		
Definition.....	3.4.2	
Burning		
Definition.....	3.4.3	
-C-		
Capacity (of a Place or Location)		
Definition.....	3.4.4	
Capacity (of a Route or Path)		
Definition.....	3.4.5	
Cause Movement of Exposed		
Definition.....	3.3.5	
Communicate Signal		
Definition.....	3.3.6	
Conduction		
Definition.....	3.4.6	
Confine/Contain Fire		
Definition.....	3.3.7	
Control		
Definition.....	3.4.7	
Control Chemical Composition of Environment		
Definition.....	3.3.8	
Control Combustion Process		
Definition.....	3.3.9	
Control Fire by Construction		
Definition.....	3.3.10	
		Control Fuel (Manage Fire)
		Definition.....
		3.3.11
		Control Fuel (Prevent Fire Ignition)
		Definition.....
		3.3.12
		Control Fuel Distribution
		Definition.....
		3.3.13
		Control Fuel Ignitibility
		Definition.....
		3.3.14
		Control Fuel Properties
		Definition.....
		3.3.15
		Control Fuel Transport
		Definition.....
		3.3.16
		Control Heat-Energy Source Transport
		Definition.....
		3.3.18
		Control Heat-Energy Sources
		Definition.....
		3.3.17
		Control Heat-Energy Transfer Processes
		Definition.....
		3.3.19
		Control Movement of Fire
		Definition.....
		3.3.20
		Control Physical Properties of Environment
		Definition.....
		3.3.21
		Control Rate of Heat-Energy Release
		Definition.....
		3.3.22
		Control Source-Fuel Interactions
		Definition.....
		3.3.23
		Control the Environment
		Definition.....
		3.3.24
		Convection
		Definition.....
		3.4.8
-D-		
		Decide Action
		Definition.....
		3.3.25
		Defend
		Definition.....
		3.4.9
		Defend Against Fire Products
		Definition.....
		3.3.26
		Defend Exposed in Place
		Definition.....
		3.3.27
		Defend the Place (of the Exposed)
		Definition.....
		3.3.28
		Definitions
		Chap. 3
		Detect Fire (Automatically)
		Definition.....
		3.3.29
		Detect Fire (to Manually Suppress Fire)
		Definition.....
		3.3.30
		Detect Need
		Definition.....
		3.3.31
-E-		
		Eliminate Fuel(s)
		Definition.....
		3.3.32
		Eliminate Heat-Energy Source(s)
		Definition.....
		3.3.33
		Explanatory Material
		Annex A
		Exposed
		Definition.....
		3.4.10

-F-

Fire
 Definition 3.4.11

Fire Impact
 Definition 3.4.12

Fire Products
 Definition 3.4.13

Fire Safety
 Definition 3.4.14

Fuel
 Definition 3.4.15

-G-

Guide
 Definition 3.2.3

-H-

Heat-Energy
 Definition 3.4.16

Heat-Energy Source (Source)
 Definition 3.4.17

Heat-Energy Transfer Process
 Definition 3.4.18

-I-

Ignitibility
 Definition 3.4.19

Ignition
 Definition 3.4.20

Immobilize
 Definition 3.4.21

Informational References (Reserved) Annex B

-L-

Limit
 Definition 3.4.22

Limit Amount Exposed
 Definition 3.3.34

Limit Fuel Quantity
 Definition 3.3.35

Limitations Chap. 6
 General 6.1
 Interaction of Concepts 6.2
 Objectives 6.4
 Quantification 6.5
 Time Factors 6.3

Listed
 Definition 3.2.4, A.3.2.4

-M-

Maintain Essential Environment
 Definition 3.3.36

Manage
 Definition 3.4.23

Manage Exposed
 Definition 3.3.37

Manage Fire
 Definition 3.3.38

Manage Fire Impact
 Definition 3.3.39

Manual
 Definition 3.4.24

Manually Suppress Fire
 Definition 3.3.40

Move Exposed
 Definition 3.3.41

-P-

Place
 Definition 3.4.25

Prevent Fire Ignition
 Definition 3.3.42

Protect
 Definition 3.4.26

Provide Movement Means
 Definition 3.3.43

Provide Safe Destination (for the Exposed)
 Definition 3.3.44

Provide Separation (Fuel Transport)
 Definition 3.3.45

Provide Separation (Source Transport)
 Definition 3.3.46

Provide Structural Stability
 Definition 3.3.47

-R-

Radiation
 Definition 3.4.27

Referenced Publications Chap. 2
 General 2.1
 NFPA Publications 2.2
 Other Publications 2.3
 References for Extracts in Advisory Sections. (Reserved) 2.4

Respond to Site
 Definition 3.3.48

Restrict Movement of Exposed
 Definition 3.3.49

-S-

Safe Destination
 Definition 3.4.28

Safeguard
 Definition 3.4.29

Safeguard Exposed
 Definition 3.3.50

Separation
 Definition 3.4.30

Shall
 Definition 3.2.5

Should
 Definition 3.2.6

Signal Need
 Definition 3.3.51

Source
 Definition 3.4.31

Standard
 Definition 3.2.7

Structure of the Fire Safety Concepts Tree Chap. 4
 Fire Safety Objectives 4.3
 General 4.1
 Logic Gates 4.2
 Manage Fire Impact 4.5
 Manage Exposed 4.5.2
 Manage Fire 4.5.1
 Prevent Fire Ignition 4.4

Suppress Fire
 Definition 3.3.52

Suppression
 Definition 3.4.32

-T-

Thermal Energy
 Definition 3.4.33

Transport
 Definition 3.4.34

-U-

Use of the Tree Chap. 7
Example 7.3
 Fuel 7.3.3
 Heat-Energy Sources 7.3.2
 Objectives 7.3.1
 Results 7.3.5
 Source-Fuel Interactions 7.3.4
General 7.1
Procedure 7.2

Step Five 7.2.5
Step Four 7.2.4
Step One 7.2.1
Step Three 7.2.3
Step Two 7.2.2

-V-

Vent Fire
 Definition 3.3.53

Sequence of Events Leading to Issuance of an NFPA Committee Document

Step 1: Call for Proposals

- Proposed new Document or new edition of an existing Document is entered into one of two yearly revision cycles, and a Call for Proposals is published.

Step 2: Report on Proposals (ROP)

- Committee meets to act on Proposals, to develop its own Proposals, and to prepare its Report.
- Committee votes by written ballot on Proposals. If two-thirds approve, Report goes forward. Lacking two-thirds approval, Report returns to Committee.
- Report on Proposals (ROP) is published for public review and comment.

Step 3: Report on Comments (ROC)

- Committee meets to act on Public Comments to develop its own Comments, and to prepare its report.
- Committee votes by written ballot on Comments. If two-thirds approve, Report goes forward. Lacking two-thirds approval, Report returns to Committee.
- Report on Comments (ROC) is published for public review.

Step 4: Technical Report Session

- “*Notices of intent to make a motion*” are filed, are reviewed, and valid motions are certified for presentation at the Technical Report Session. (“Consent Documents” that have no certified motions bypass the Technical Report Session and proceed to the Standards Council for issuance.)
- NFPA membership meets each June at the Annual Meeting Technical Report Session and acts on Technical Committee Reports (ROP and ROC) for Documents with “certified amending motions.”
- Committee(s) vote on any amendments to Report approved at NFPA Annual Membership Meeting.

Step 5: Standards Council Issuance

- Notification of intent to file an appeal to the Standards Council on Association action must be filed within 20 days of the NFPA Annual Membership Meeting.
- Standards Council decides, based on all evidence, whether or not to issue Document or to take other action, including hearing any appeals.

Committee Membership Classifications

The following classifications apply to Technical Committee members and represent their principal interest in the activity of the committee.

- M *Manufacturer*: A representative of a maker or marketer of a product, assembly, or system, or portion thereof, that is affected by the standard.
- U *User*: A representative of an entity that is subject to the provisions of the standard or that voluntarily uses the standard.
- I/M *Installer/Maintainer*: A representative of an entity that is in the business of installing or maintaining a product, assembly, or system affected by the standard.
- L *Labor*: A labor representative or employee concerned with safety in the workplace.
- R/T *Applied Research/Testing Laboratory*: A representative of an independent testing laboratory or independent applied research organization that promulgates and/or enforces standards.
- E *Enforcing Authority*: A representative of an agency or an organization that promulgates and/or enforces standards.
- I *Insurance*: A representative of an insurance company, broker, agent, bureau, or inspection agency.
- C *Consumer*: A person who is, or represents, the ultimate purchaser of a product, system, or service affected by the standard, but who is not included in the *User* classification.
- SE *Special Expert*: A person not representing any of the previous classifications, but who has a special expertise in the scope of the standard or portion thereof.

NOTES:

1. “Standard” connotes code, standard, recommended practice, or guide.
2. A representative includes an employee.
3. While these classifications will be used by the Standards Council to achieve a balance for Technical Committees, the Standards Council may determine that new classifications of members or unique interests need representation in order to foster the best possible committee deliberations on any project. In this connection, the Standards Council may make appointments as it deems appropriate in the public interest, such as the classification of “Utilities” in the National Electrical Code Committee.
4. Representatives of subsidiaries of any group are generally considered to have the same classification as the parent organization.

NFPA Document Proposal Form

NOTE: All Proposals must be received by 5:00 pm EST/EDST on the published Proposal Closing Date.

For further information on the standards-making process, please contact the Codes and Standards Administration at 617-984-7249 or visit www.nfpa.org/codes.

For technical assistance, please call NFPA at 1-800-344-3555.

FOR OFFICE USE ONLY

Log #: _____

Date Rec'd: _____

Please indicate in which format you wish to receive your ROP/ROC electronic paper download
(Note: If choosing the download option, you must view the ROP/ROC from our website; no copy will be sent to you.)

Date April 1, 200X Name John J. Doe Tel. No. 716-555-1234

Company Air Canada Pilot's Association Email _____

Street Address 123 Summer Street Lane City Lewiston State NY Zip 14092

*****If you wish to receive a hard copy, a street address MUST be provided. Deliveries cannot be made to PO boxes.**

Please indicate organization represented (if any) _____

1. (a) NFPA Document Title National Fuel Gas Code NFPA No. & Year 54, 200X Edition

(b) Section/Paragraph 3.3

2. Proposal Recommends (check one): new text revised text deleted text

3. Proposal (include proposed new or revised wording, or identification of wording to be deleted): [Note: Proposed text should be in legislative format; i.e., use underscore to denote wording to be inserted (inserted wording) and strike-through to denote wording to be deleted (~~deleted wording~~).]

Revise definition of effective ground-fault current path to read:

3.3.78 Effective Ground-Fault Current Path. An intentionally constructed, permanent, low impedance electrically conductive path designed and intended to carry underground electric fault current ~~conditions~~ from the point of a ground fault on a wiring system to the electrical supply source.

4. Statement of Problem and Substantiation for Proposal: (Note: State the problem that would be resolved by your recommendation; give the specific reason for your Proposal, including copies of tests, research papers, fire experience, etc. If more than 200 words, it may be abstracted for publication.)

Change uses proper electrical terms.

5. Copyright Assignment

(a) I am the author of the text or other material (such as illustrations, graphs) proposed in the Proposal.

(b) Some or all of the text or other material proposed in this Proposal was not authored by me. Its source is as follows: (please identify which material and provide complete information on its source)

ABC Co.

I hereby grant and assign to the NFPA all and full rights in copyright in this Proposal and understand that I acquire no rights in any publication of NFPA in which this Proposal in this or another similar or analogous form is used. Except to the extent that I do not have authority to make an assignment in materials that I have identified in (b) above, I hereby warrant that I am the author of this Proposal and that I have full power and authority to enter into this assignment.

Signature (Required)

John J. Doe

PLEASE USE SEPARATE FORM FOR EACH PROPOSAL

Mail to: Secretary, Standards Council · National Fire Protection Association
1 Batterymarch Park · Quincy, MA 02169-7471 OR
Fax to: (617) 770-3500 OR Email to: proposals_comments@nfpa.org

NFPA Document Proposal Form

NOTE: All Proposals must be received by 5:00 pm EST/EDST on the published Proposal Closing Date.

For further information on the standards-making process, please contact the Codes and Standards Administration at 617-984-7249 or visit www.nfpa.org/codes.

For technical assistance, please call NFPA at 1-800-344-3555.

FOR OFFICE USE ONLY

Log #: _____

Date Rec'd: _____

Please indicate in which format you wish to receive your ROP/ROC electronic paper download
(Note: If choosing the download option, you must view the ROP/ROC from our website; no copy will be sent to you.)

Date _____ Name _____ Tel. No. _____

Company _____ Email _____

Street Address _____ City _____ State _____ Zip _____

*****If you wish to receive a hard copy, a street address MUST be provided. Deliveries cannot be made to PO boxes.**

Please indicate organization represented (if any) _____

1. (a) NFPA Document Title _____ NFPA No. & Year _____

(b) Section/Paragraph _____

2. Proposal Recommends (check one): new text revised text deleted text

3. Proposal (include proposed new or revised wording, or identification of wording to be deleted): [Note: Proposed text should be in legislative format; i.e., use underscore to denote wording to be inserted (inserted wording) and strike-through to denote wording to be deleted (~~deleted wording~~).]

4. Statement of Problem and Substantiation for Proposal: (Note: State the problem that would be resolved by your recommendation; give the specific reason for your Proposal, including copies of tests, research papers, fire experience, etc. If more than 200 words, it may be abstracted for publication.)

5. Copyright Assignment

(a) I am the author of the text or other material (such as illustrations, graphs) proposed in the Proposal.

(b) Some or all of the text or other material proposed in this Proposal was not authored by me. Its source is as follows: (please identify which material and provide complete information on its source)

I hereby grant and assign to the NFPA all and full rights in copyright in this Proposal and understand that I acquire no rights in any publication of NFPA in which this Proposal in this or another similar or analogous form is used. Except to the extent that I do not have authority to make an assignment in materials that I have identified in (b) above, I hereby warrant that I am the author of this Proposal and that I have full power and authority to enter into this assignment.

Signature (Required) _____

PLEASE USE SEPARATE FORM FOR EACH PROPOSAL

Mail to: Secretary, Standards Council · National Fire Protection Association
1 Batterymarch Park · Quincy, MA 02169-7471 OR
Fax to: (617) 770-3500 OR Email to: proposals_comments@nfpa.org